

MEMELER

Dr. Selçuk Tunalı
TOBB ETÜ, 26 Eylül 2014



2

Selçuk Tunalı, MD, PhD



3

Selçuk Tunalı, MD, PhD

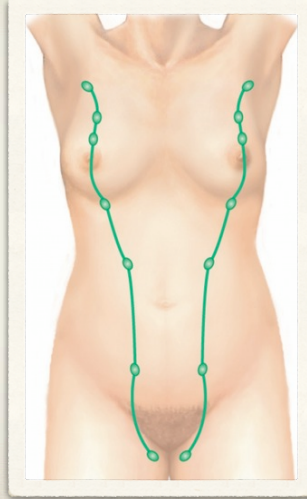


4

Selçuk Tunalı, MD, PhD

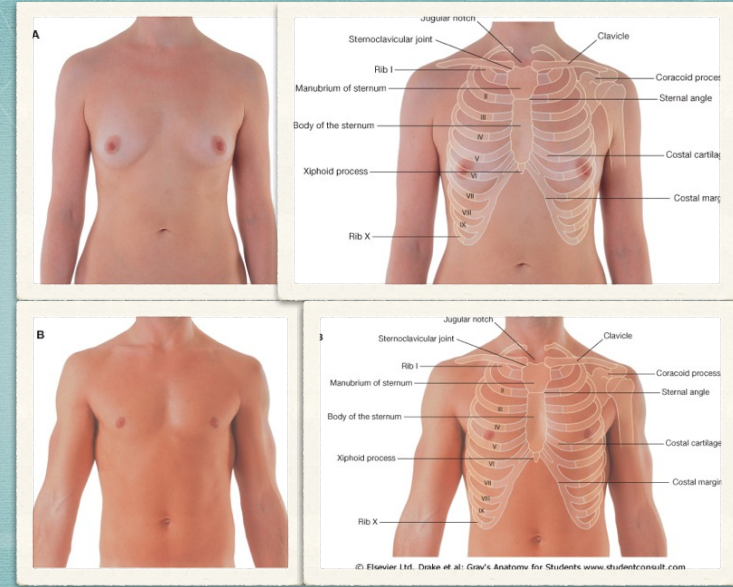
Meme Anatomisi – 1

- * Glandula mammaria
- * Stroma
- * Deri
- * Ektoderm kökenli
- * 2.-6. kostalar arasında
- * Sternum – linea axillaris mediana



5

Selcuk Tunalı, MD, PhD

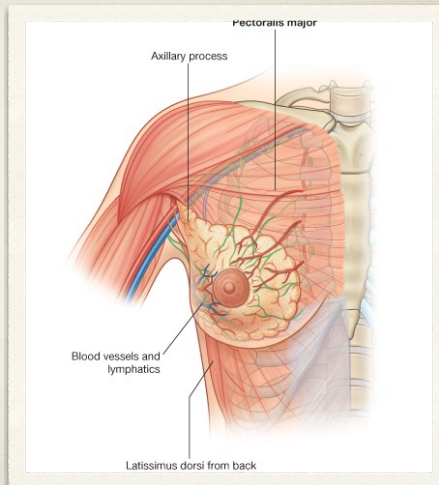


6

Selcuk Tunalı, MD, PhD

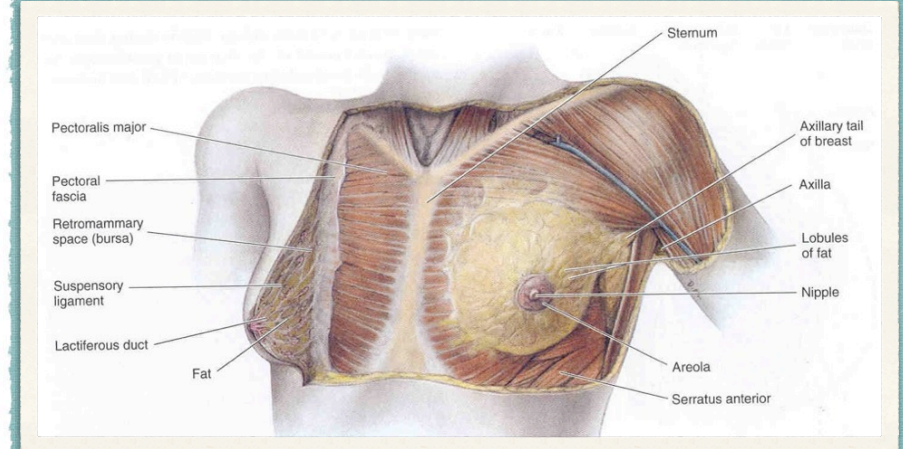
Meme Anatomisi – 2

- * Pektoral bölgenin yüzeysel fascia'sı içinde
- * Tabanında derin pektoral fascia
- * m. pectoralis major
- * m. serratus anterior
- * m. obliquus externus abdominis



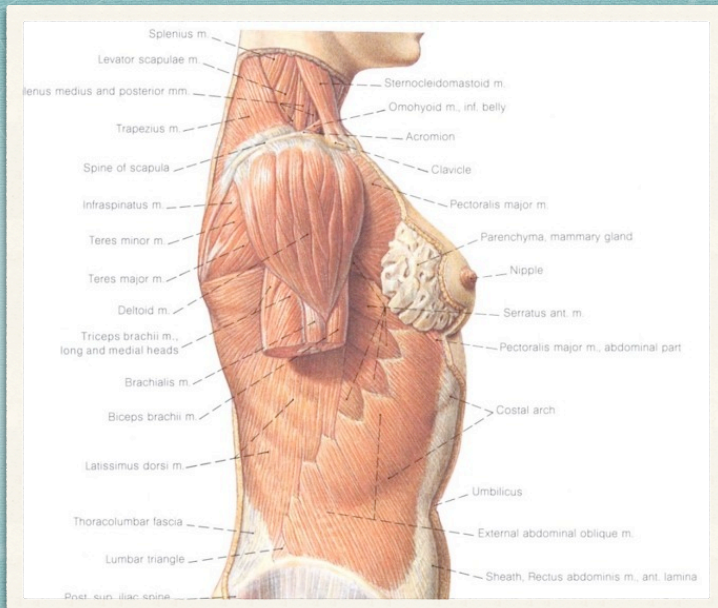
7

Selcuk Tunalı, MD, PhD



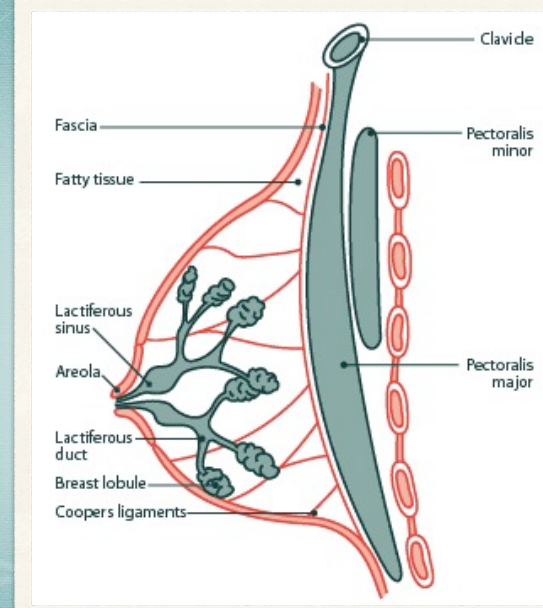
8

Selcuk Tunalı, MD, PhD



9

Selcuk Tunalı, MD, PhD

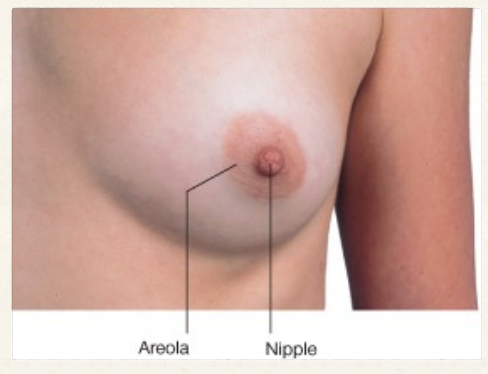


10

Selcuk Tunalı, MD, PhD

Meme Anatomisi – 3

- * 150-200 gr
- * Corpus mammae
- * Sulcus mammarium (sinus mammarium)
- * Papilla mammaria – 4. interkostal aralık
- * Areola mammae

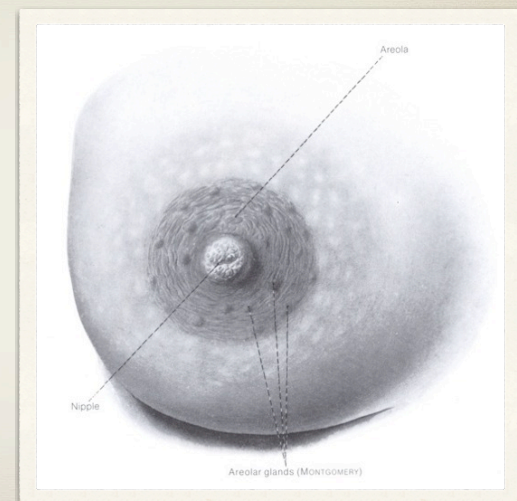


11

Selcuk Tunalı, MD, PhD

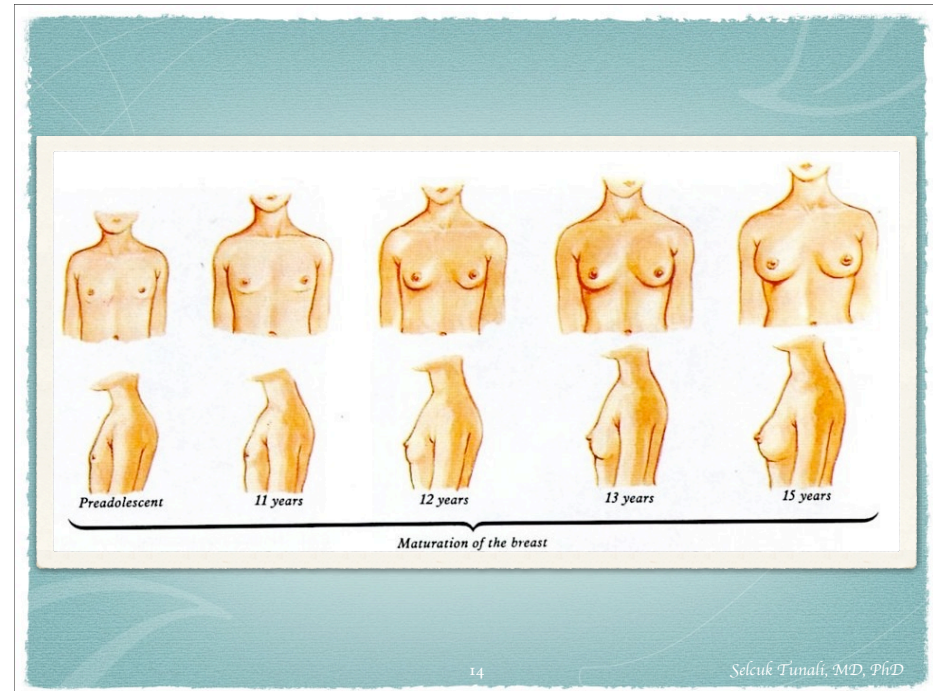
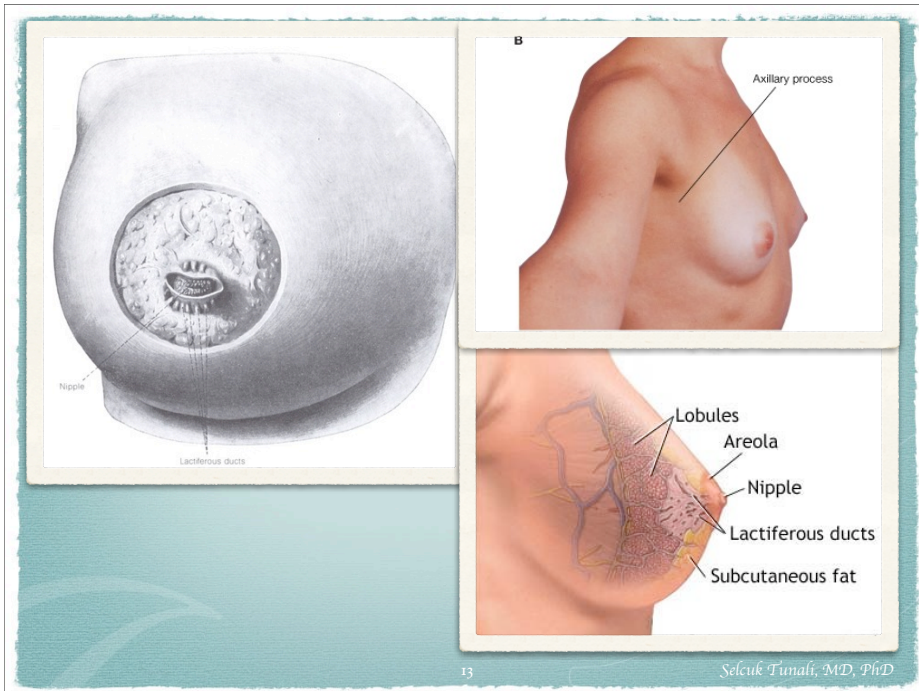
Meme Anatomisi – 4

- * Tubercula areolare (Montgomery)
- * Glandulae areolares
- * Polythelia
- * Polymastia
- * Amastia



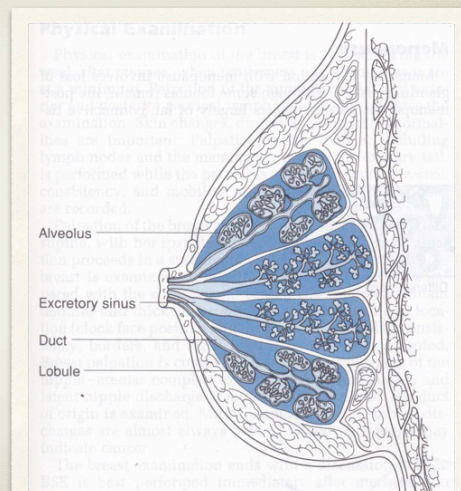
12

Selcuk Tunalı, MD, PhD



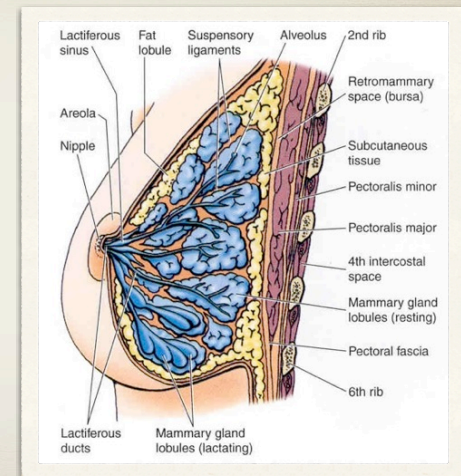
Meme Anatomisi – 5

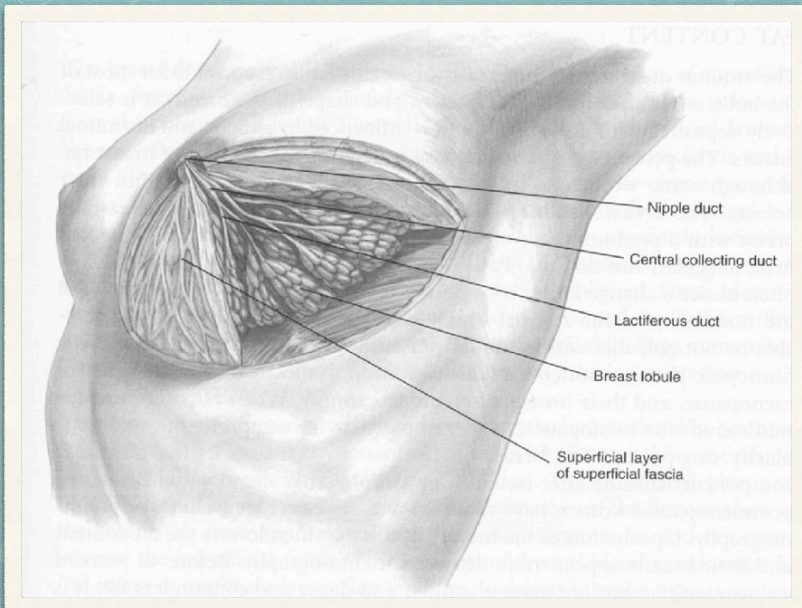
- * Bez + yağ + bağ
- * Ekzokrin
- * Tübüloalveoler
- * 15-20 lob
- * Lobi glandulae mammae



Meme Anatomisi – 6

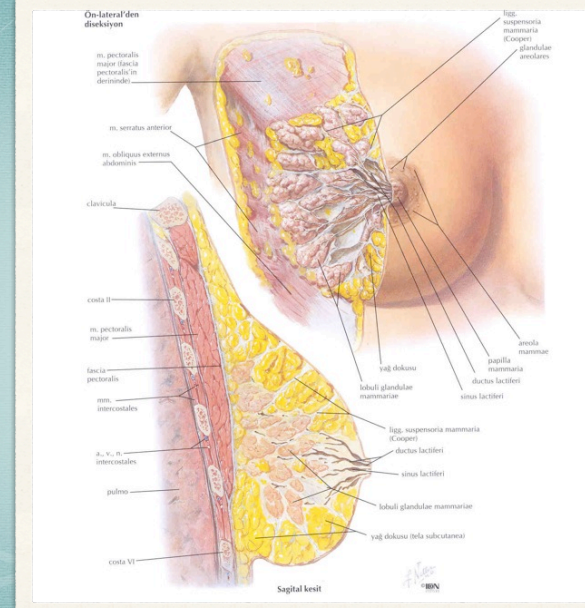
- * Ductus lactiferi
- * Sinus lactiferi
- * Ostium papillare
- * M. sphincter papilla
- * Ligg. suspensoria mammae (Cooper) – ductus ile dermis arası





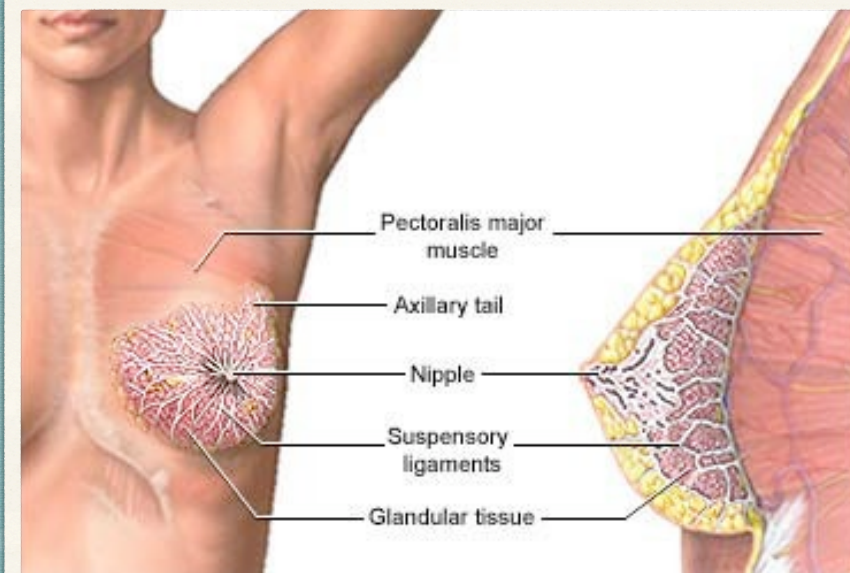
17

Selcuk Tunalı, MD, PhD



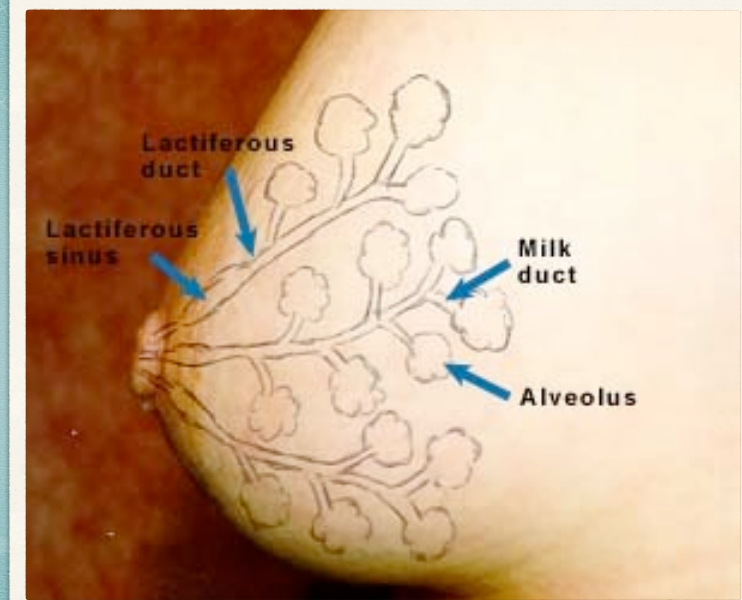
18

Selcuk Tunalı, MD, PhD



19

Selcuk Tunalı, MD, PhD

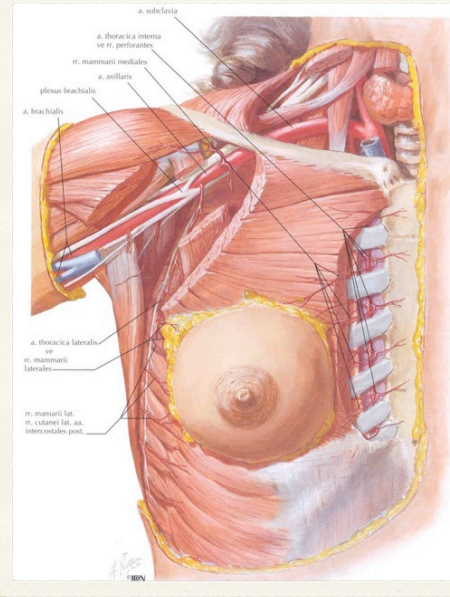


20

Selcuk Tunalı, MD, PhD

Arterleri

- * Rr. mammarii laterales (2-4 a. intercostalis post. / a. thoracica lat.)
- * Rr. mammarii mediales (a. thoracica interna'nın perforan dallarından)
- * A. thoraco-acromialis (a. axillaris)
- * 2-4 a. intercostalis ant.

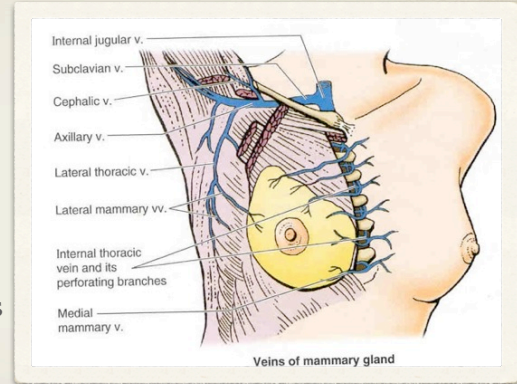


21

Selcuk Tunali, MD, PhD

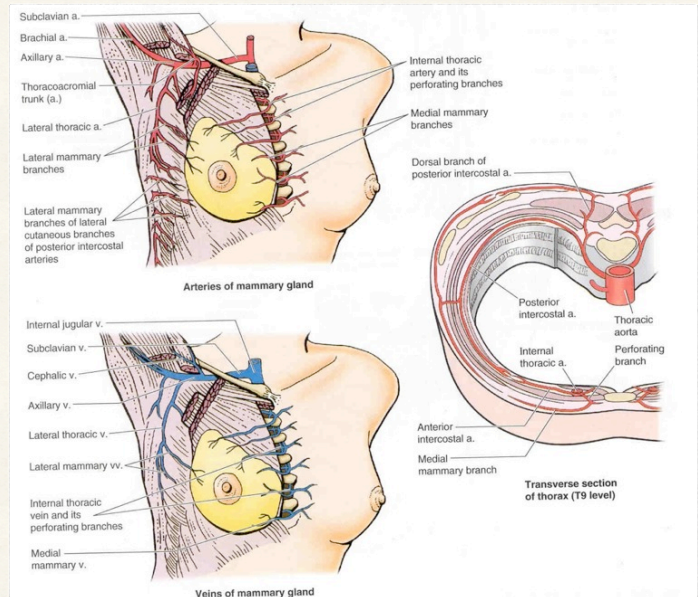
Venleri & İnervasyon

- * Yüzeysel venleri – v. thoracica interna'ya
- * Derin venleri – v. axillaris, vv. intercostales, v. thoracica interna
- * 2-6 nn. intercostales – r. cutaneus ant. / lat.
- * N. supraclavicularis



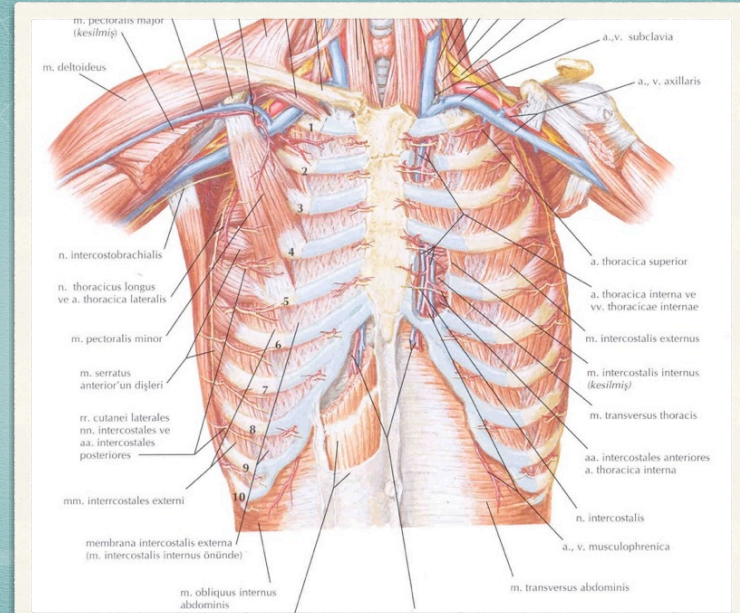
22

Selcuk Tunali, MD, PhD



23

Selcuk Tunali, MD, PhD



24

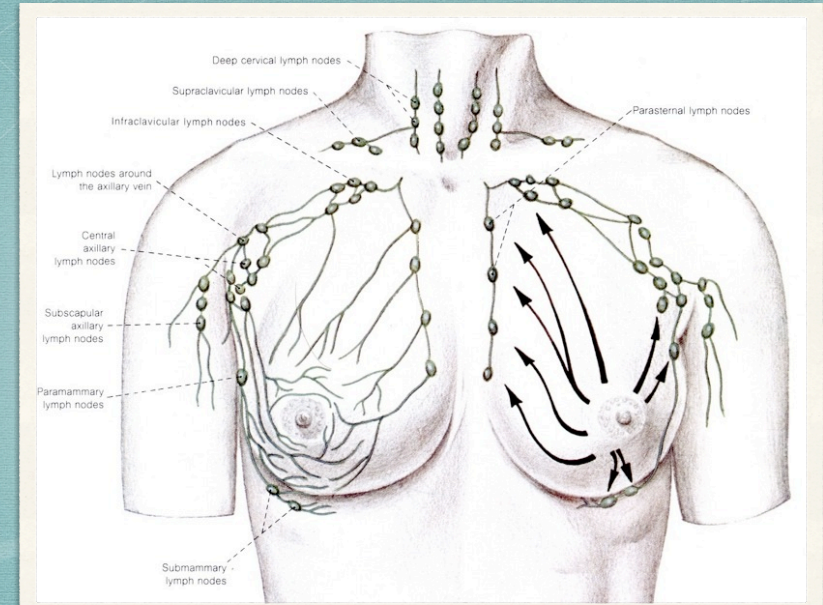
Selcuk Tunali, MD, PhD

Lenfatik Drenaj

- * %75: axilla
- * nodi lymphatici pectorales
- * nodi lymphatici subscapulares
- * Geri kalanı a. thoracica interna çevresindeki:
 - * nodi lymphatici parasternales (internal mammarian)
 - * nodi lymphatici intercostales

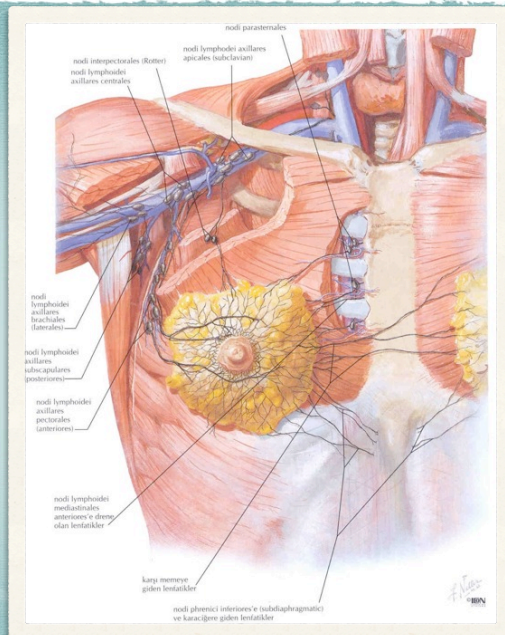
25

Selcuk Tunali, MD, PhD

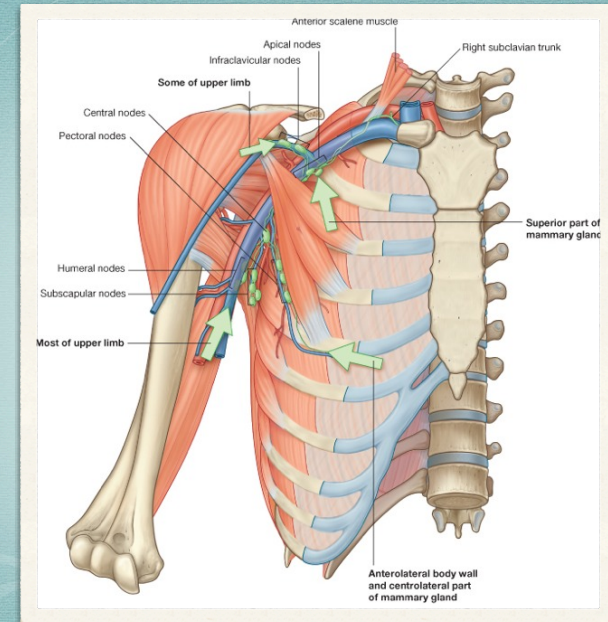


26

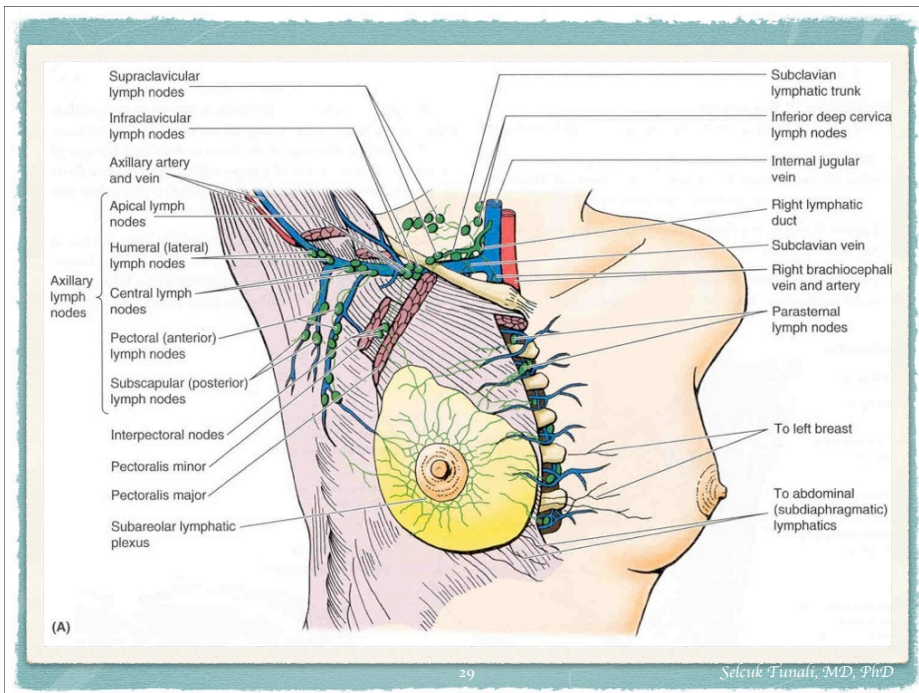
Selcuk Tunali, MD, PhD



Selcuk Tunali, MD, PhD

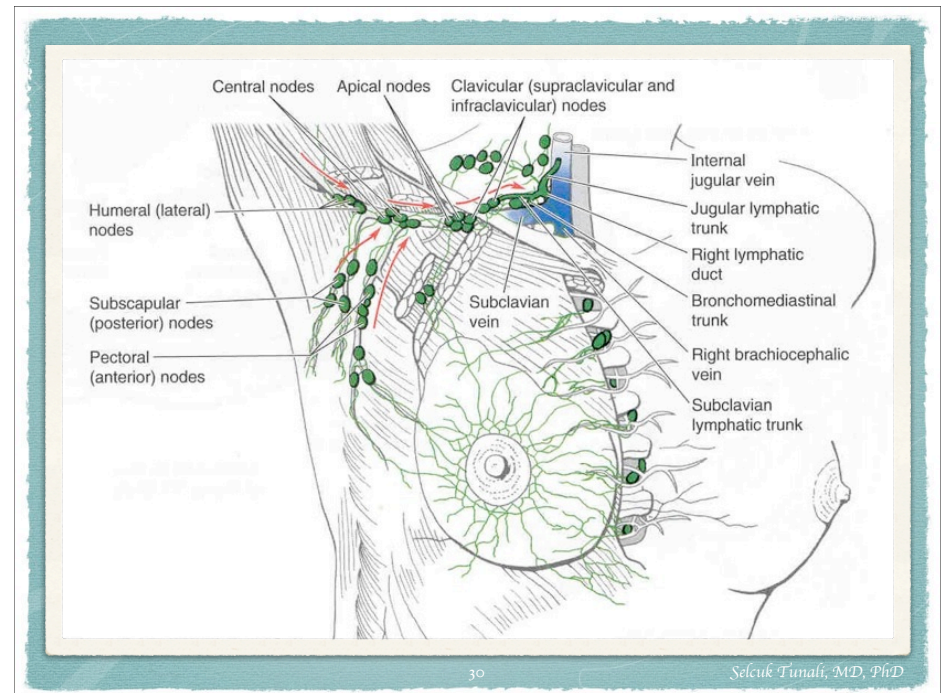


Selcuk Tunali, MD, PhD



29

Selcuk Tunali, MD, PhD



30

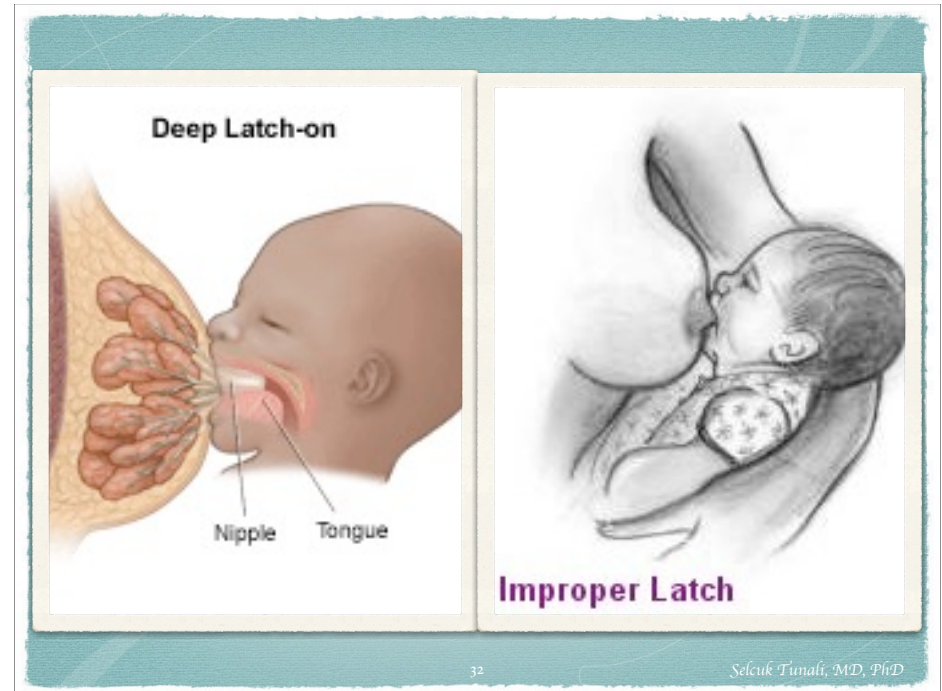
Selcuk Tunali, MD, PhD

Klinik – 1

- * Colostrum
- * Fibroadenom
- * İnfiltratif duktal ca.
- * Sentinel lenf nodu
- * Kor / insizyonel / eksizyonel biyopsi Lumpektomi
- * Basit mastektomi
- * Modifiye radikal mastektomi (meme+lenf)
- * Radikal mastektomi (meme+lenf+fascia+kas)
- * Gynecomastia

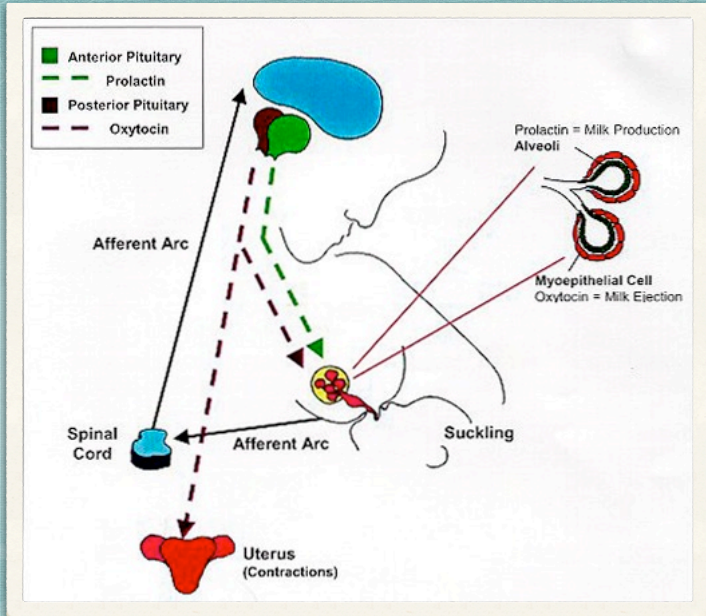
31

Selcuk Tunali, MD, PhD



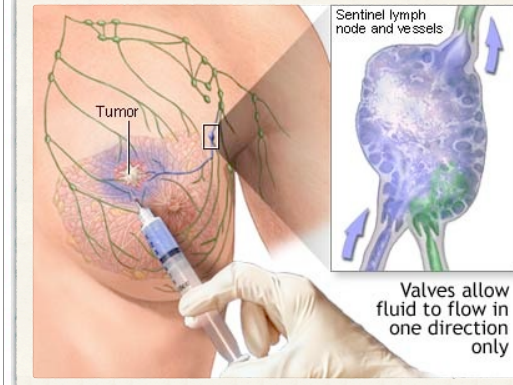
32

Selcuk Tunali, MD, PhD



33

Selcuk Tunalı, MD, PhD



34

Selcuk Tunalı, MD, PhD

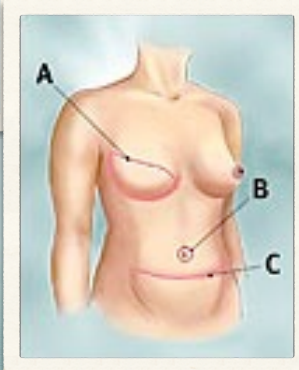
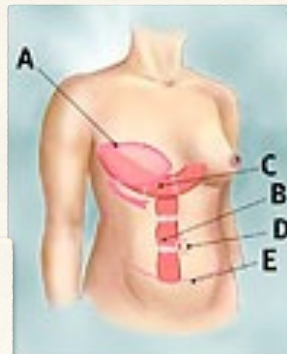
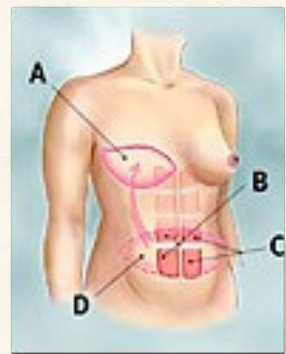
Klinik – 2

- * Mamografi
- * Ultrasonografi
- * Manyetik rezonans görüntüleme
- * Kendi kendine muayene
- * Klinik muayene



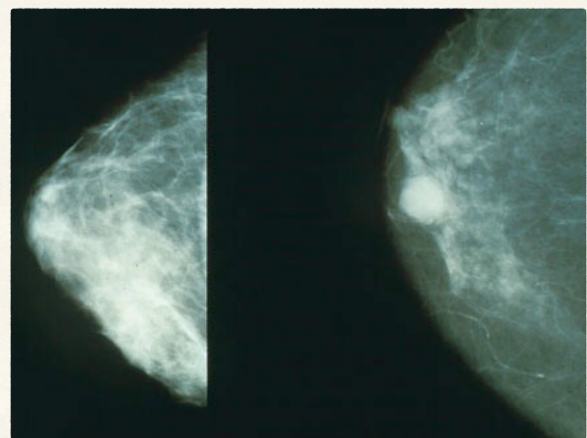
36

Selcuk Tunalı, MD, PhD



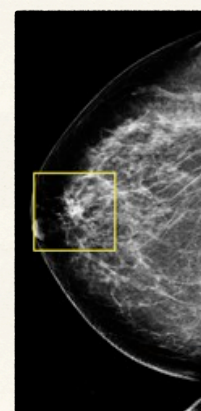
35

Selcuk Tunalı, MD, PhD

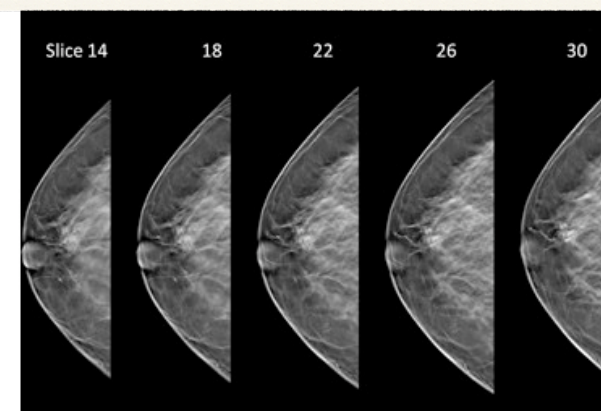


37

Selcuk Tunali, MD, PhD



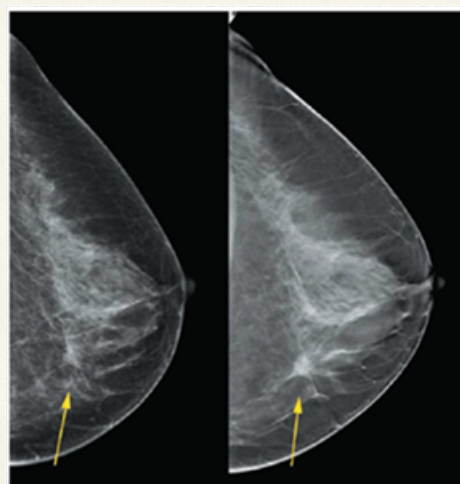
Standard 2-D
Mammogram image



3-D Mammography slices

38

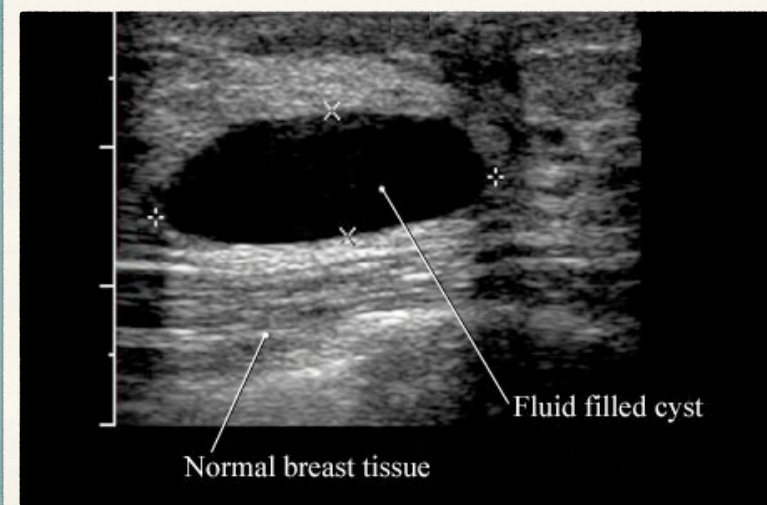
Selcuk Tunali, MD, PhD



Shown with an arrow, a spiculated cancer with microcalcifications is better appreciated in the tomosynthesis slice (right image) than on the digital mammography image (left image)

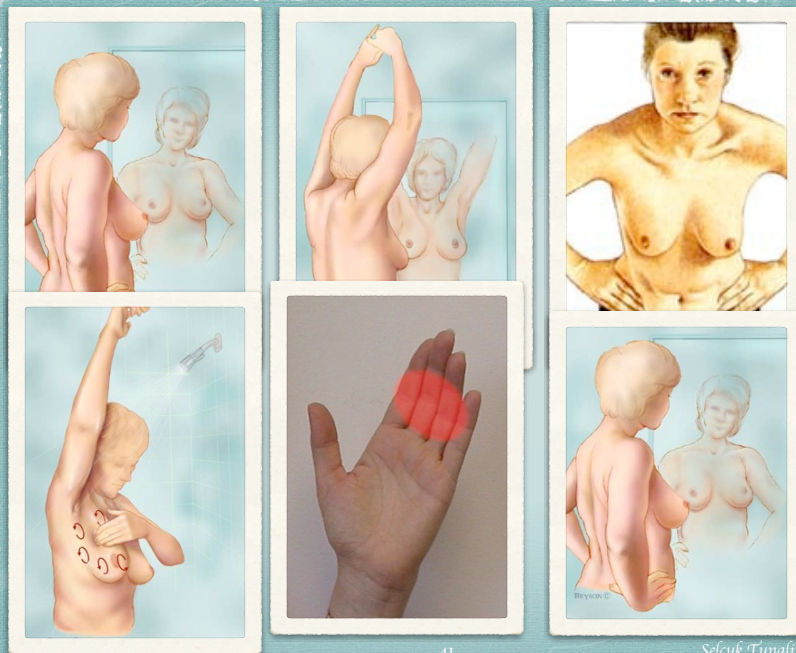
39

Selcuk Tunali, MD, PhD



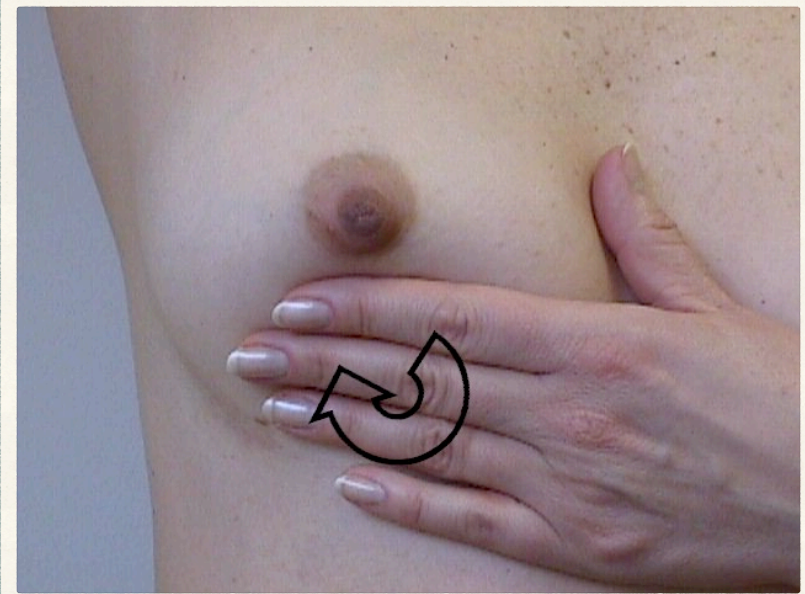
40

Selcuk Tunali, MD, PhD



41

Selcuk Tunalı, MD, PhD



42

Selcuk Tunalı, MD, PhD



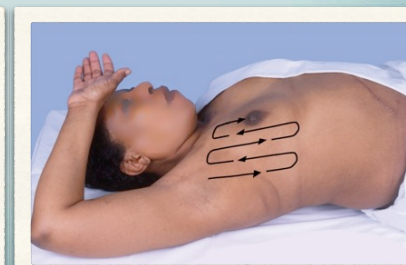
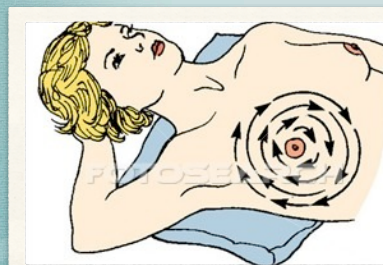
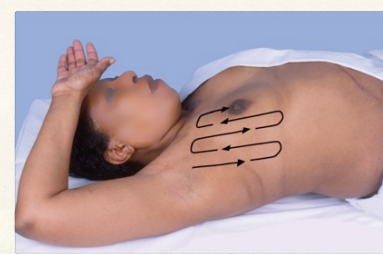
Breast self-exam:
Manual inspection
(reclining)

With fingertips close
together, gently probe
each breast in one of
these three patterns



43

Selcuk Tunalı, MD, PhD



44

Selcuk Tunalı, MD, PhD



stunali@etu.edu.tr
salcuk@hawaii.edu
<http://twitter.com/tunalis>
<http://www.tunalis.org>