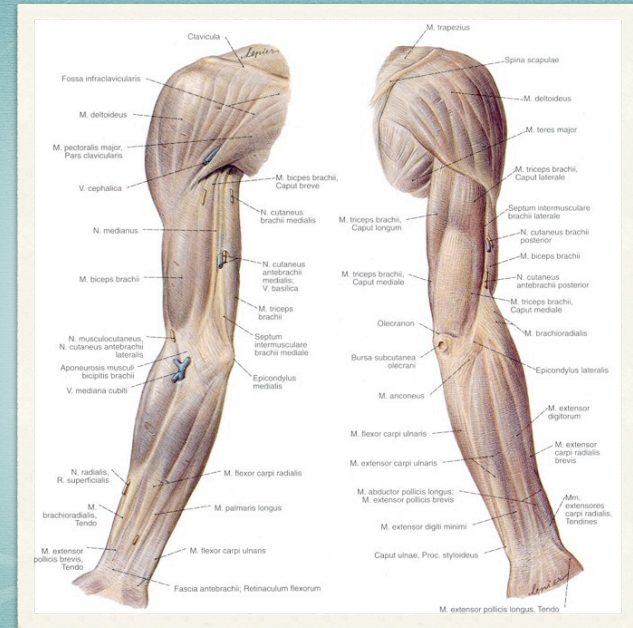


OMUZ VE KOLUN ÖN BÖLGESİ

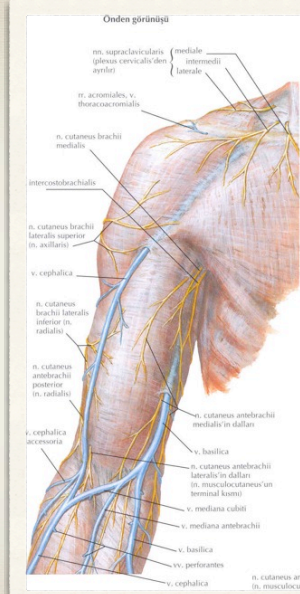
Dr. Selçuk TUNALI
TOBB ETÜ, 26 Eylül 2014



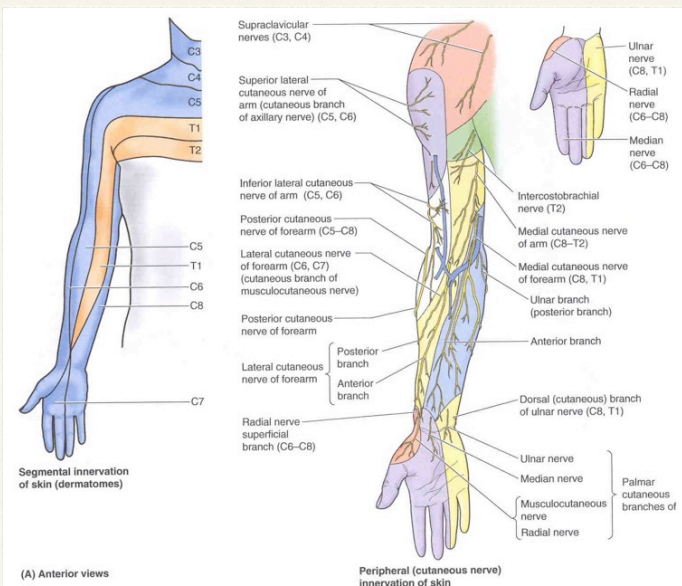
Selçuk Tunalı, MD, PhD

Duyu Sinirleri

- * Nn. supraclaviculares
- * N. cutaneus brachii med.
- * N. intercostobrachialis (T₂)
- * N. cutaneus antibrachii med.
- * N. cutaneus brachii lat. sup.
- * N. cutaneus brachii lat. inf.
- * N. cutaneus antibrachii lat.



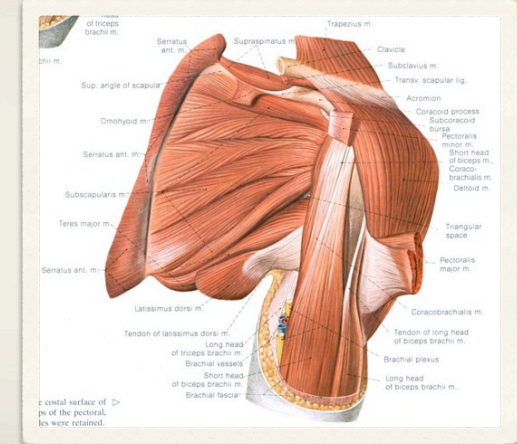
Selçuk Tunalı, MD, PhD



Selçuk Tunalı, MD, PhD

M. Subcapularis

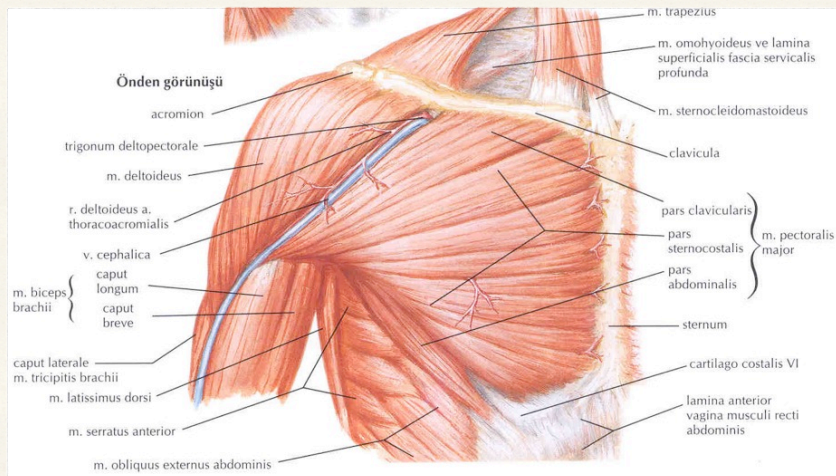
- * O: fossa subscapularis
- * İ: tuberculum minus
- * N. subscapularis
- * Kola adduksiyon, iç rotasyon



6

Selcuk Tunalı, MD, PhD

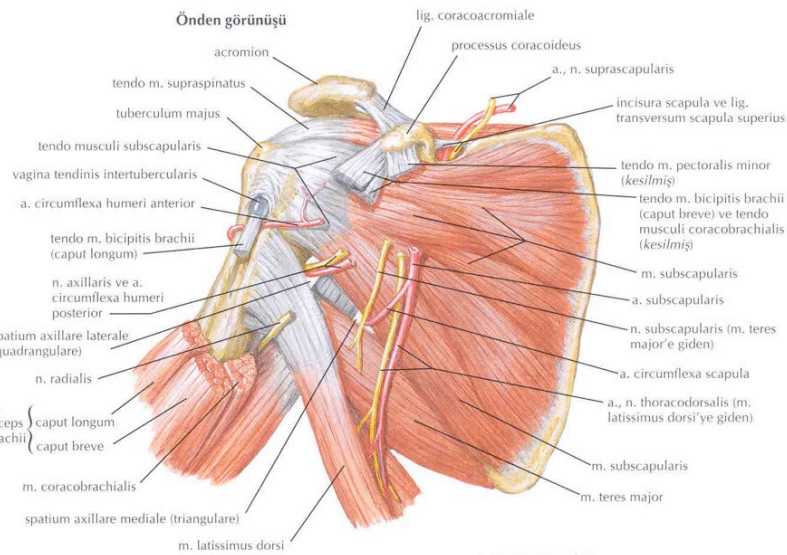
Önden görünüşü



5

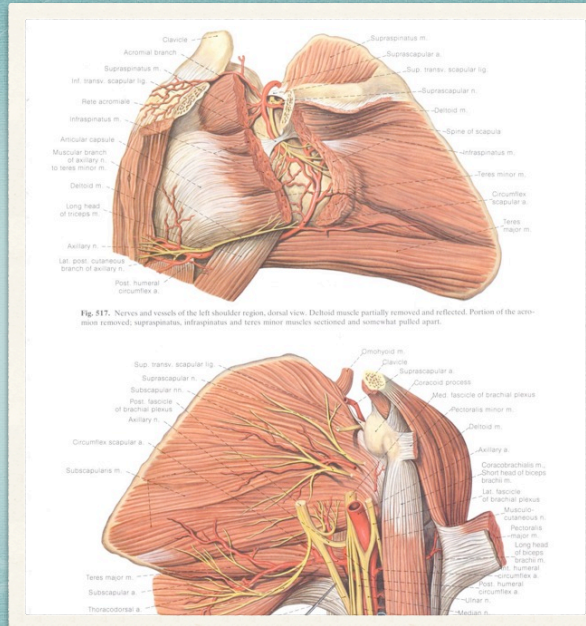
Selcuk Tunalı, MD, PhD

Önden görünüşü



7

Selcuk Tunalı, MD, PhD

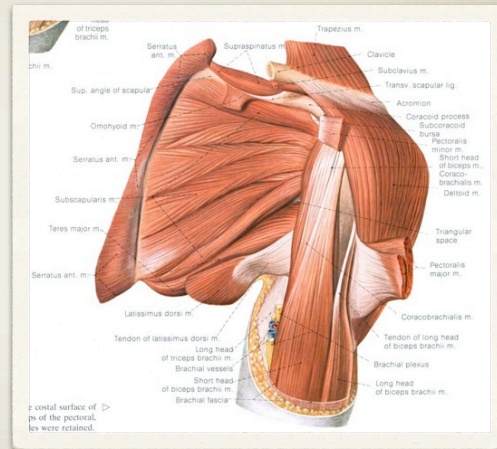


8

Selcuk Tunalı, MD, PhD

Omuz Manşeti

- * Rotator cuff
- * Scapulohumeral kaslar
- * Omuz eklemini dıştan destekler
- * SITS



9

Selcuk Tunali, MD, PhD

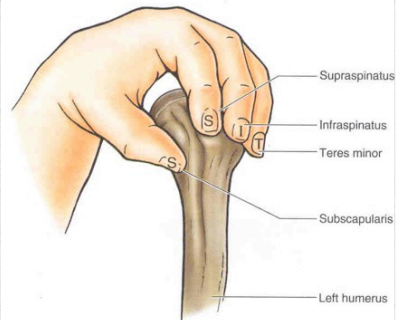
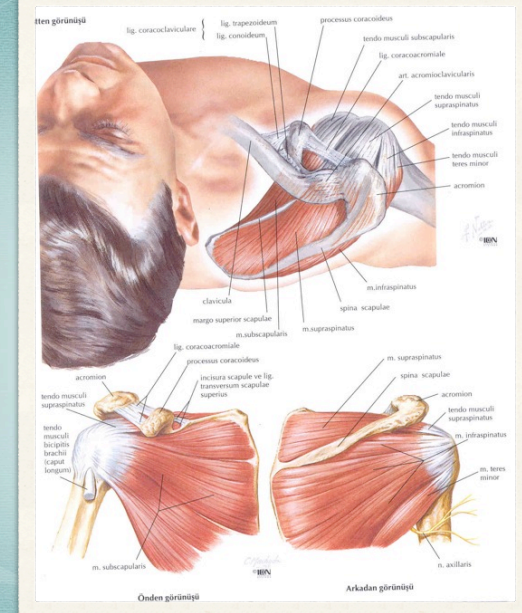
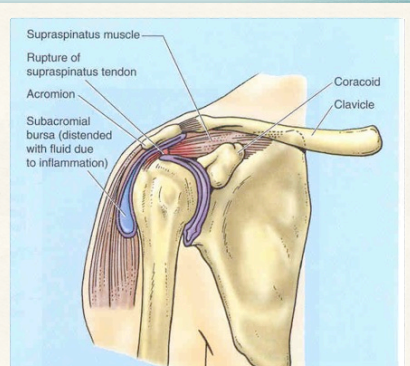
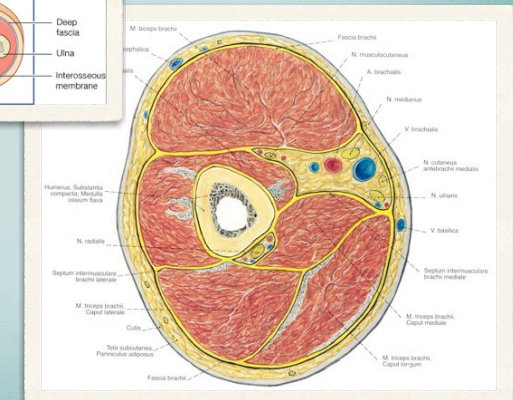
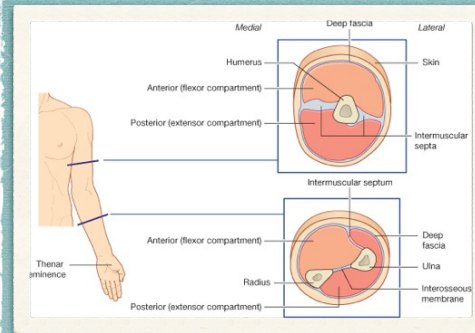


Figure 6.22. Demonstration of the position of the rotator cuff muscles. Anterior view. The primary combined function of these four scapulohumeral muscles is to hold the relatively large head of the humerus (arm bone) in the smaller, shallow, glenoid cavity of the scapula. The tendons of the muscle blend with the fibrous capsule of the glenohumeral joint to form a musculotendinous rotator cuff, which reinforces the capsule on three sides (anteriorly, superiorly, and posteriorly) as it provides active support for the glenohumeral joint.

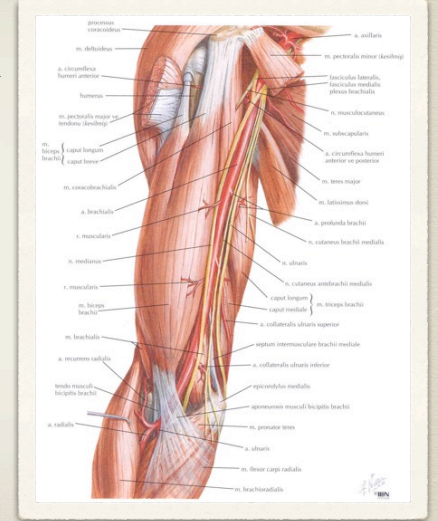


Selcuk Tunali, MD, PhD



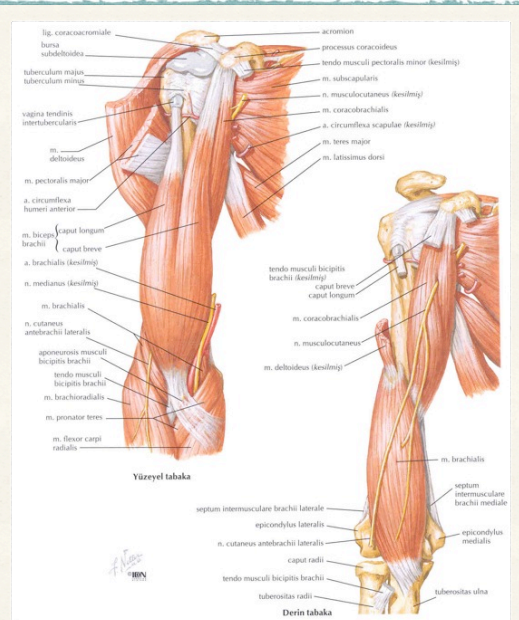
M. Biceps Brachii

- * Caput longum: tuberculum supraglenoidale
- * Caput breve: proc. coracoideus
- * İ: tuberositas radii
- * Aponeurosis bicipitalis
- * N. musculocutaneus
- * Ön kola sup., fleksiyon



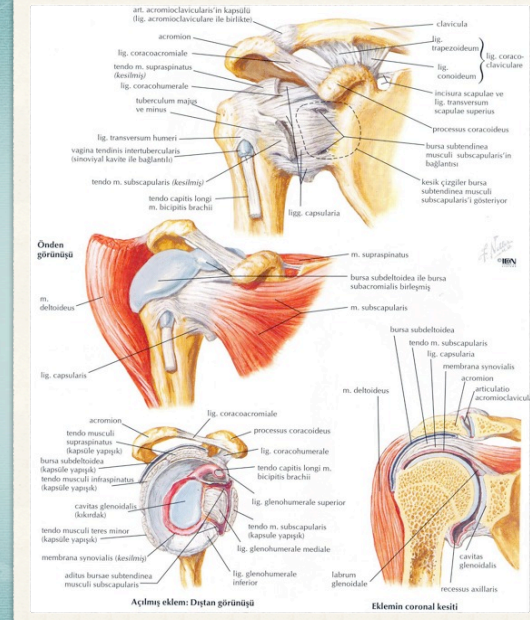
14

Selcuk Tunalı, MD, PhD



15

Selcuk Tunalı, MD, PhD



16

Selcuk Tunalı, MD, PhD



highest intercostal a.

first intercostal branches

Subcostal a.

1st thoracic a.

Dorsal branches

Perforating branches

8th, 9th, 10th a.

Deep cutaneous net a.

11th, 12th a.

1st lumbar a.

2nd lumbar a.

Superf. segment a.

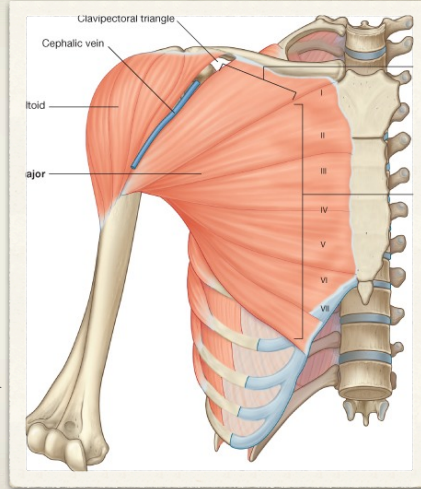
26

[illegible]



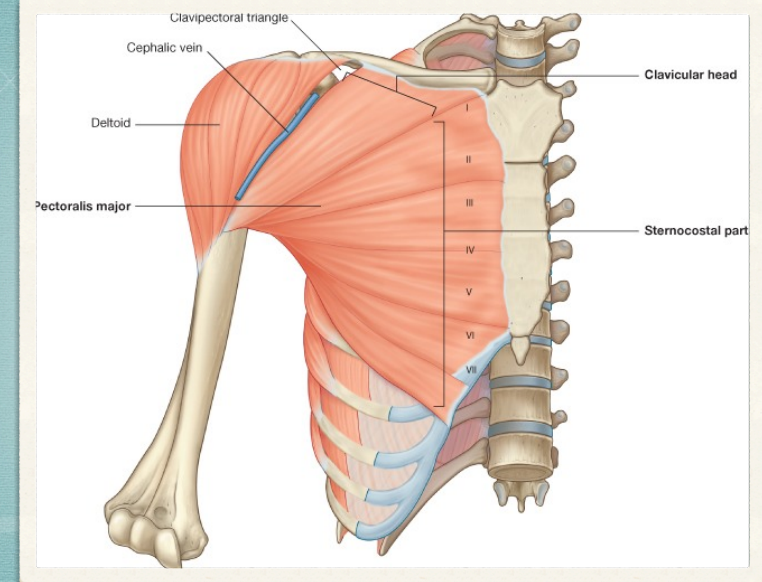
M. Pectoralis Major

- * Pars clavicularis
- * Pars sternocostalis
- * Pars abdominalis
- * İ: crista tuberculi majoris
- * N. pectoralis med., lat.
- * Kola add., flek., iç rotasyon



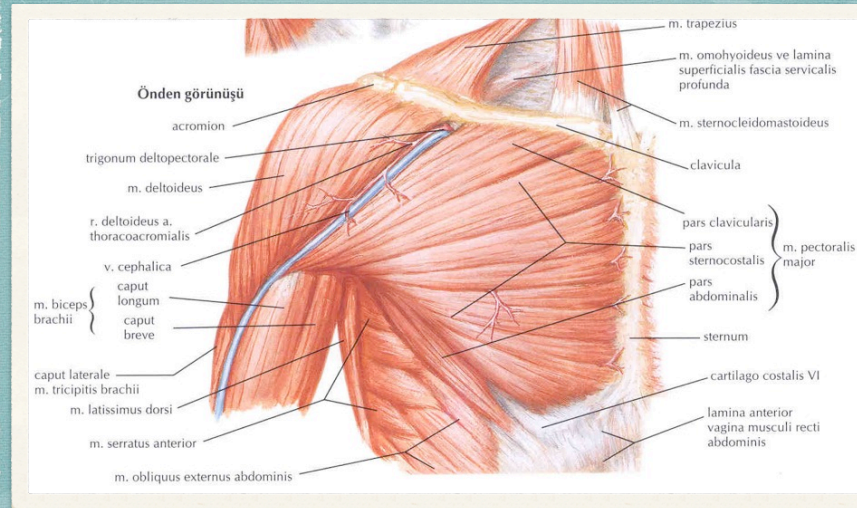
33

Selcuk Tunali, MD, PhD



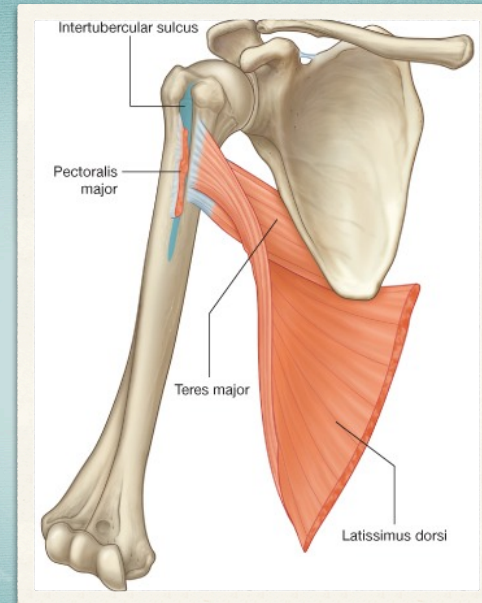
34

Selcuk Tunali, MD, PhD



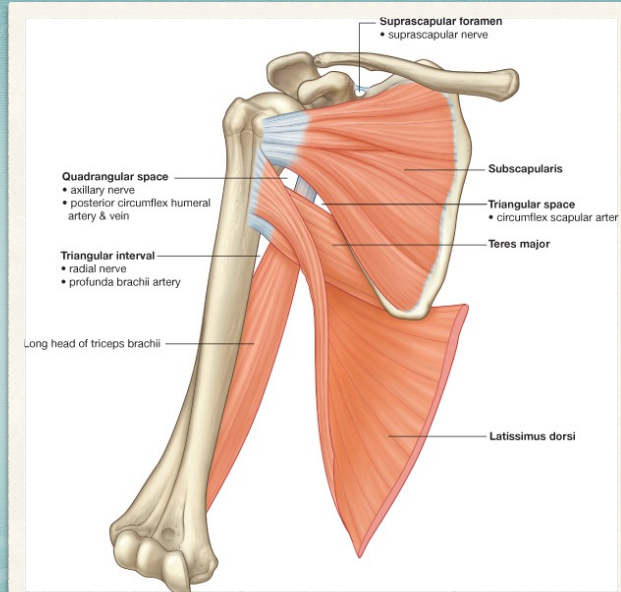
35

Selcuk Tunali, MD, PhD



36

Selcuk Tunali, MD, PhD

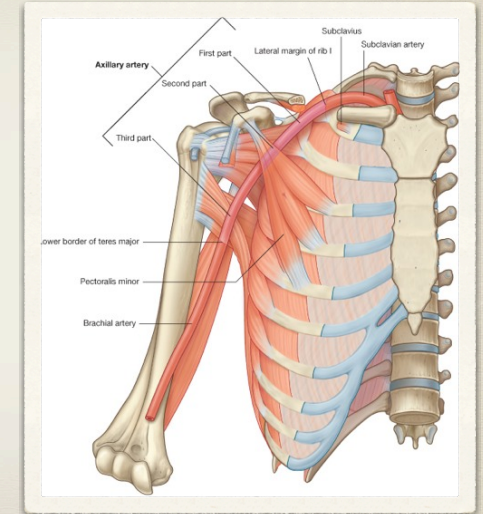


37

Selcuk Tunali, MD, PhD

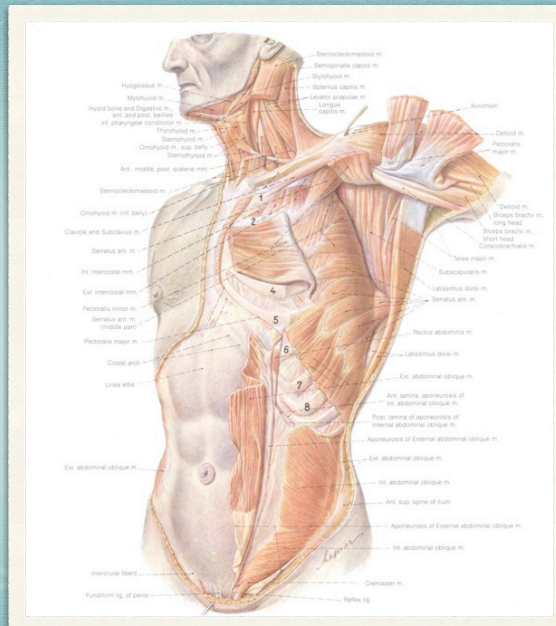
M. Pectoralis Minor

- * O: 2-5 kosta
- * İ: proc. coracoideus
- * N. pectoralis med.
- * Omuz öne, aşağıya
- * Omuz sabitse kostaları kaldırır



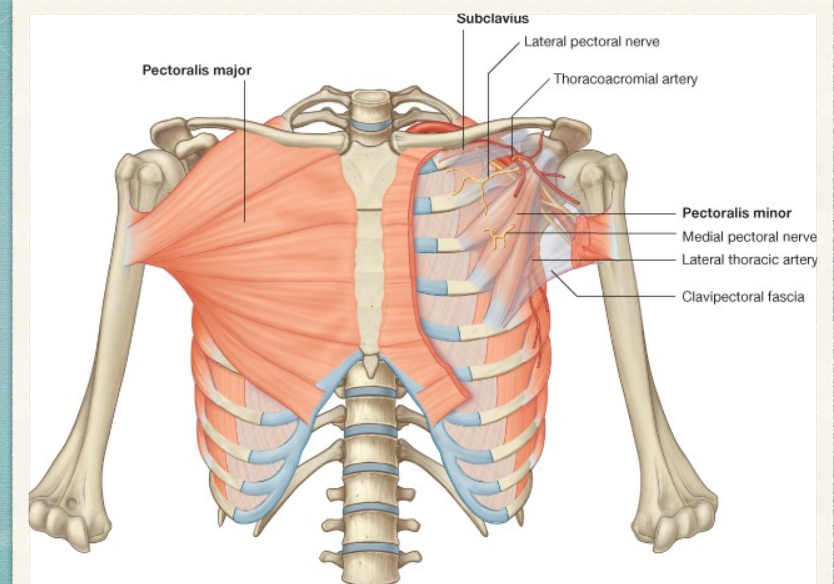
38

Selcuk Tunali, MD, PhD



39

Selcuk Tunali, MD, PhD

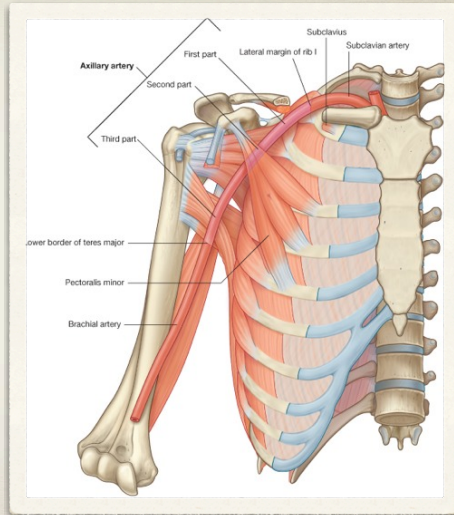


40

Selcuk Tunali, MD, PhD

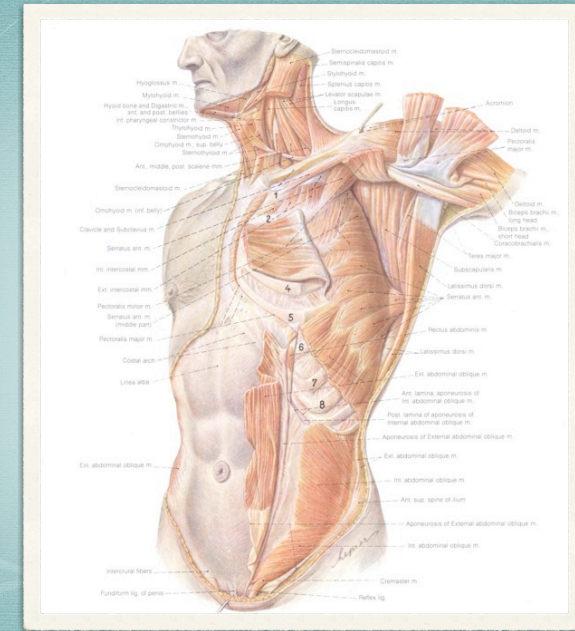
M. Subclavius

- * O: 1. kosta
- * İ: sulcus subclavius
- * N. subclavius
- * Omuz aşağıya, içe, öne



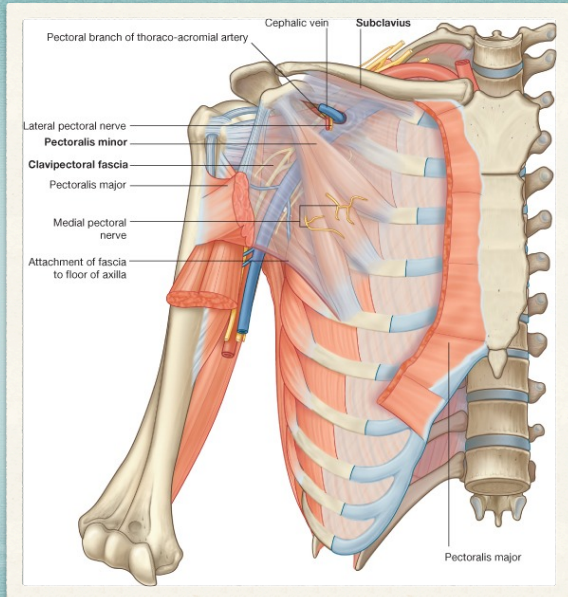
41

Selcuk Tunali, MD, PhD



42

Selcuk Tunali, MD, PhD

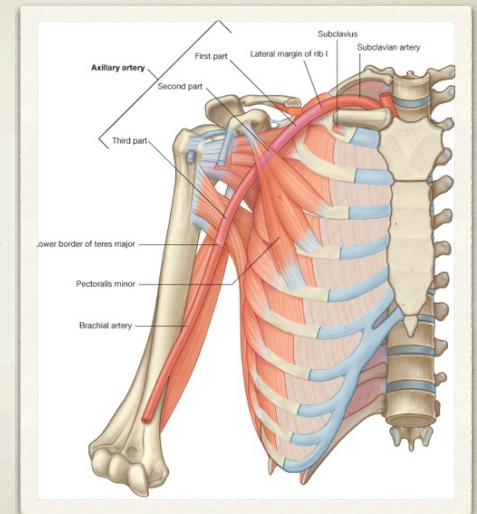


43

Selcuk Tunali, MD, PhD

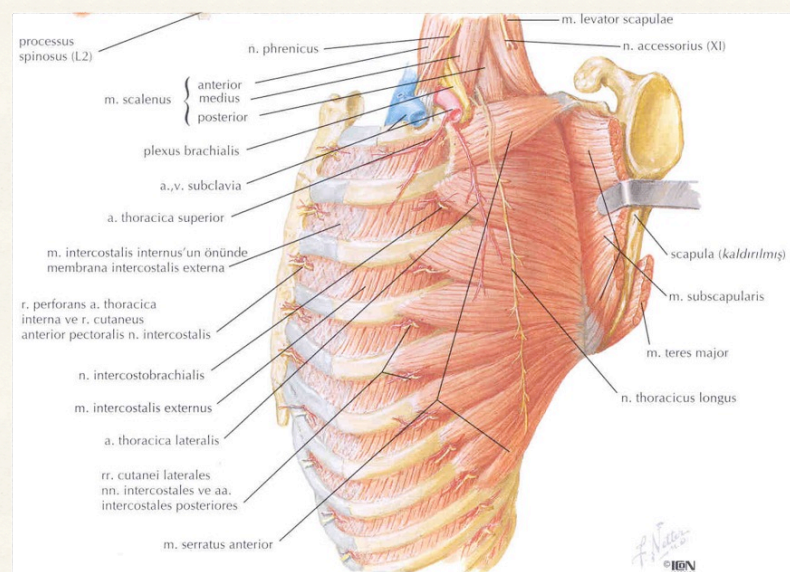
M. Serratus Ant.

- * Pars sup.: 1-2. kosta
- * Pars media: 3-4. kosta
- * Pars inf.: 5-8. kosta
- * İ: angulus sup./medialis/inf.
- * N. thoracicus longus
- * Scapula'yı toraksa çeker
- * Hiperabduksiyon



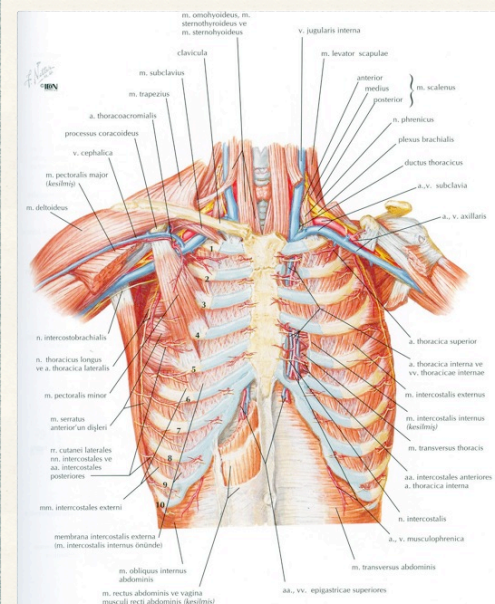
44

Selcuk Tunali, MD, PhD

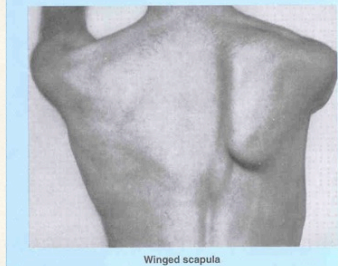


45

Selcuk Tunalı, MD, PhD



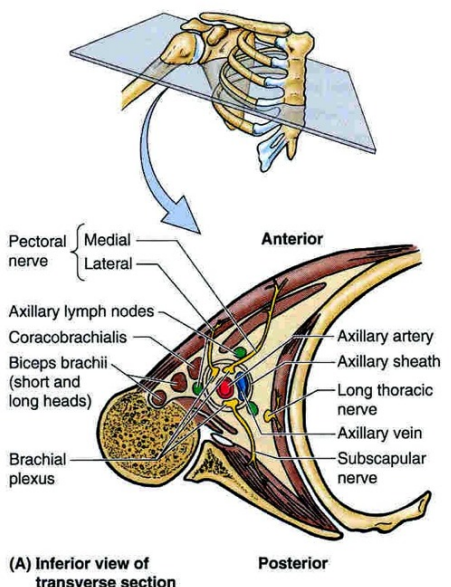
long thoracic nerve is exceptional in that it courses on the superficial aspect of the serratus anterior muscle, which it supplies. Thus, when the limbs are elevated—as in a knife fight—the nerve is especially vulnerable. Weapons, including missiles (bullets) directed toward the thorax, are a common source of injury. ☹



Winged scapula

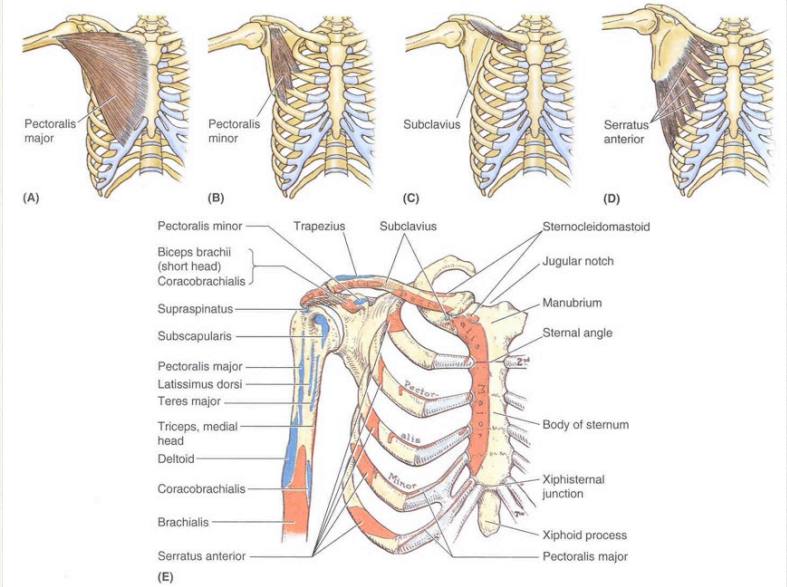
46

Selcuk Tunalı, MD, PhD



47

Selcuk Tunalı, MD, PhD

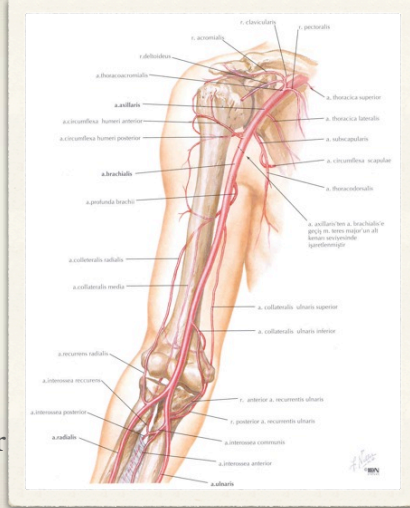


48

Selcuk Tunalı, MD, PhD

A. Axillaris

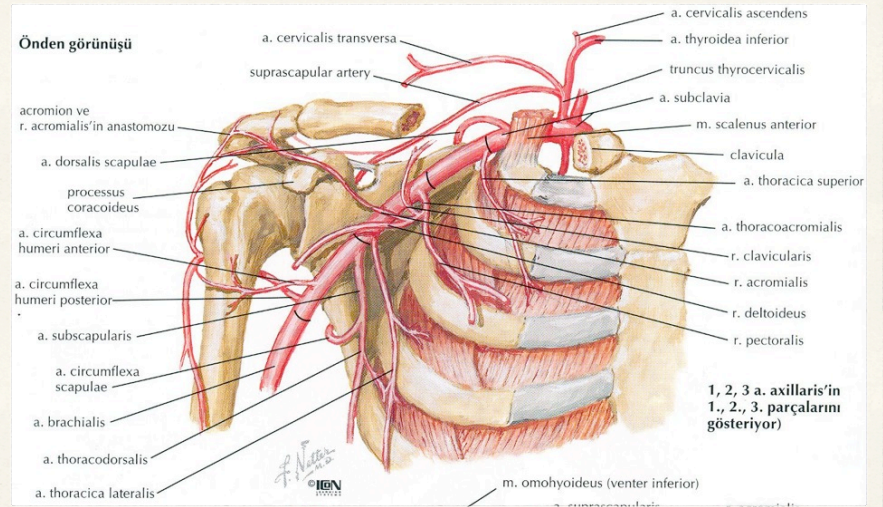
- * M. pectoralis minor
- * I: a. thoracica sup.
- * II: a. thoraco-acromialis, a. thoracica lat.
- * III: a. subscapularis, a. circumflexa ant. humeri, a. circumflexa post. humeri
- * A. brachialis (m. teres major alt kenar)



49

Selcuk Tunali, MD, PhD

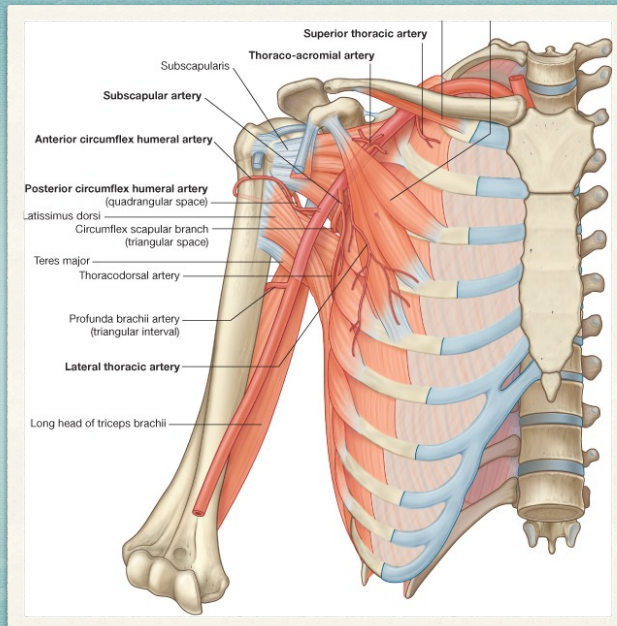
Önden görünüşü



1, 2, 3 a. axillaris'in 1., 2., 3. parçalarını gösteriyor

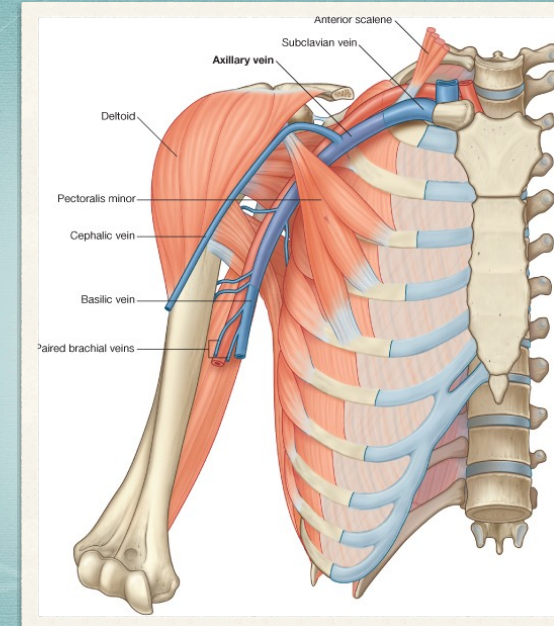
50

Selcuk Tunali, MD, PhD



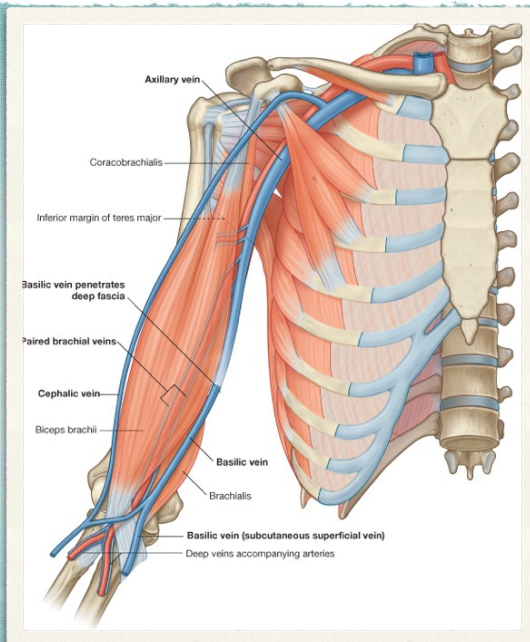
51

Selcuk Tunali, MD, PhD



52

Selcuk Tunali, MD, PhD



stunali@etu.edu.tr
selcuk@hawaii.edu
<http://twitter.com/tunalis>
<http://www.tunalis.org>